

FITTING INSTRUCTIONS

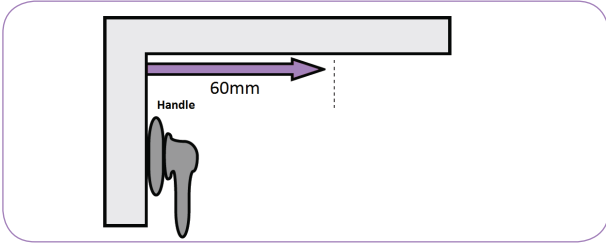
DELUXE BLIND



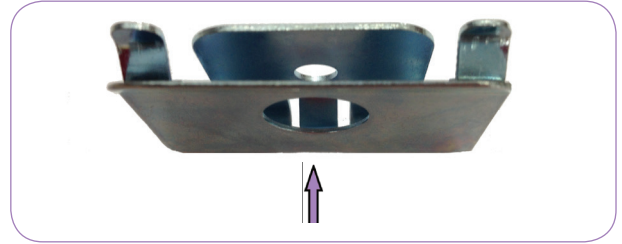
**kidsblinds**
.net

Contents:

- Your blind
- Fixing bracket (number as appropriate for the size of your window blind eg. widths up to 800 mm require 2 brackets, widths up to 1.5m require 3 brackets, widths up to 2m require 4 brackets).



1. Make a mark 60mm out from the window frame and 100mm in from one end of the recess. (see diagram)



2. On this mark fix one of the brackets supplied, with a suitable fixing for your wall, making sure that the open side of the bracket is facing away from the window.

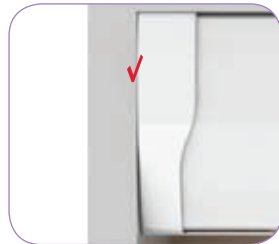


3. Repeat steps 1 & 2 at the opposite side of the recess. Additional brackets can be evenly spaced and used as centre supports by following these recommendations:

- Widths up to 800mm require 2 brackets.
- Widths up to 1.5m require 3 brackets.
- Widths up to 2m require 4 brackets.

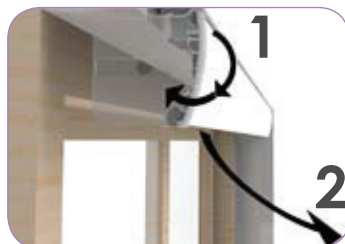


4. Enter fascia into top brackets as shown and snap firmly into place. (Check fascia is flush with recess edge.)



5. The end caps can be moved outwards 10mm at each side, which can take up any small gaps between the headrail and the side of the recess that may appear due to mis-measurement.

To Remove Blind



1. To remove blind, fully raise and grip both the fabric role and the fascia with each hand. Rotate the entire blind downward slightly in the direction shown to open the top fix brackets.

2. While holding the blind in this position, pull it down and away from the brackets.



1. Position the blind above the window making sure that the overlap is the same at each end and the bottom of the brackets is level with the top of the recess.



2. Remove the brackets from the blind, use the same text from To Remove Blind Option 1 and same picture but a close up of the bracket and screw driver.

NOTE: It is recommended to use the top and bottom holes where possible.



3. Place each bracket in turn in the position you had previously marked and fix with suitable fixings for your substrate. On wider blinds a centre support will be supplied. This should be located in the middle of the blind and fixed using the same method described earlier.

NOTE: The use of wall plugs is recommended where appropriate.



4. When all brackets have been fitted insert blind lining up fascia endcaps with slots on fixing brackets. Adjustments of fascia endcaps can be used to aid this process. When both sides have been located ensure blind is pushed fully home until locks on both the fixing brackets and centre support have been snapped in to place.

To Remove Blind Use following methods according to accessibility of brackets



1. Using flat blade screwdriver, release locking clip as shown and pull fascia away from bracket.

OR



2. Using flat blade screwdriver, release locking clip by inserting screwdriver between bracket and endcap.



kidsblinds
.net

enquiries@kidsblinds.net
www.kidsblinds.net